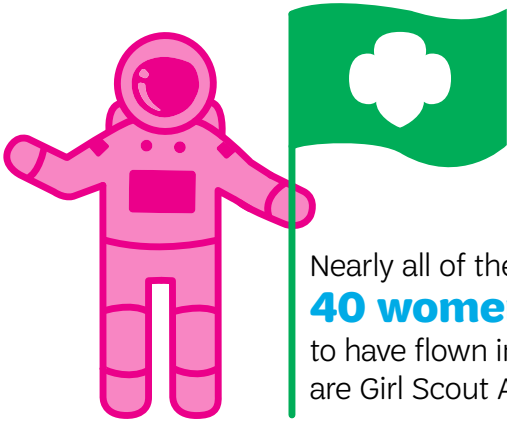
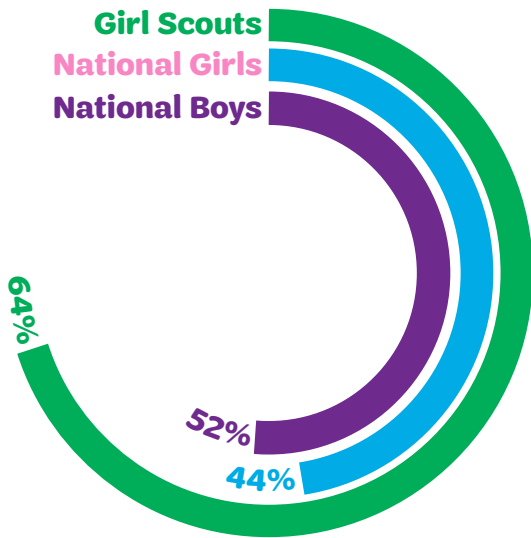


How Girl Scouts Measure Up

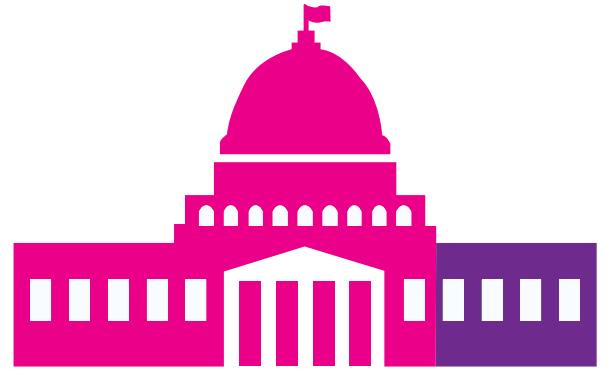


Nearly all of the **40 women** to have flown into space are Girl Scout Alumnae.

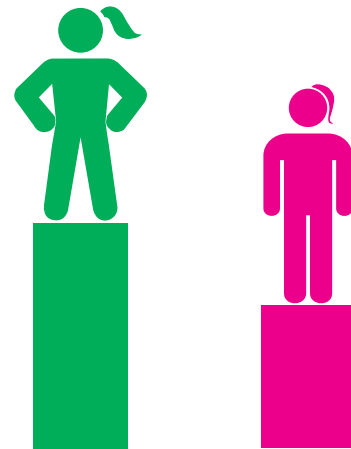
Girl Scouts are more likely to consider themselves leaders compared to their peers:



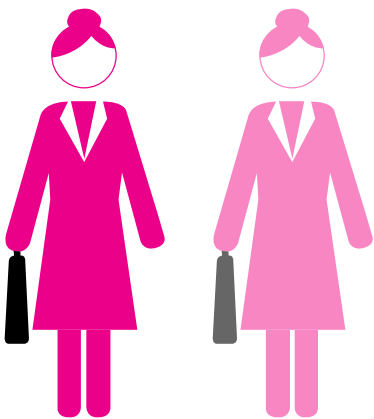
Each year, Girl Scouts collectively spend **tens of millions of hours** improving their communities.



75% of current female senators are Girl Scout alumnae.



63% of Girl Scout alumnae consider themselves competent and capable, compared to **55%** of non-alumnae.



1 out of 2 businesswomen in the U.S. are Girl Scout alumnae.

According to the World Bank, investments in women and girls strengthen countries'...



Sources: Ban Bossy Youth Leadership Poll (Girl Scout Research Institute, 2014); Engendering Development Through Gender Equality in Rights, Resources, and Voice (World Bank, 2001); Girl Scout Alumnae Businesswomen Report (GSRI, 2015); Girl Scout Alumnae by the Numbers (GSRI, 2015); Girl Scouting Works: The Alumnae Impact Study (GSRI, 2012).